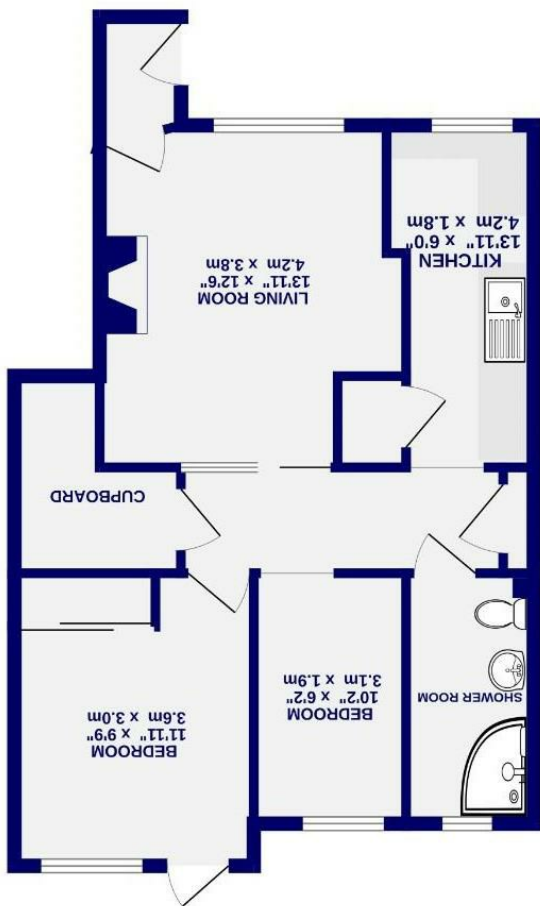


Sturdee Grove  
Huntington, York  
YO31 8FD



Sturdee Grove  
Huntington, York  
YO31 8FD

75% Shared Ownership  
£130 000

 2  1

\* Shared ownership retirement property for the over 60's \*

Located in the popular residential area of Huntington, within walking distance of York City Centre, the train station and York District Hospital, is this well-presented ground floor apartment offered on a shared ownership basis. With a 75% share available, this property could make an ideal retirement home or downsize option.

Accessed via a private front door, the apartment features a spacious living room to the front, leading through to an internal hallway. Off the hall lies a fitted kitchen offering a range of wall and base units, providing ample storage and worktop space. There are also two well-proportioned bedrooms, a modern three-piece shower room, and a deceptively large storage cupboard.

Externally, residents enjoy access to well-maintained communal gardens and parking on a first-come, first-served basis. Offered with no onward chain, early viewing is highly recommended.

Leasehold  
Length of lease- New 60 year lease to be issued on completion of sale  
No rent payable at 75% ownership  
Ground rent - £0  
Service Charge- £134.64 per calendar month

Council Tax Band- B

